

WELCOME TO THE STEVENSON CLEVEDON QUARRY INFO DAY



Today we will be providing an update on the proposed expansion of the Clevedon Quarry. If you have any questions, please ask any of the Stevenson staff you see here today. Otherwise, explore the offerings and enjoy!

WHO ARE STEVENSON

Stevenson has a long-standing history, beginning as a family run drainage business that started in 1917. Over the next 100 years, Stevenson has expanded, becoming a significant manufacturer of a variety of high-quality aggregate solutions designed for a range of infrastructure projects across New Zealand. Since 2018, Stevenson has been a subsidiary of Fulton Hogan.

Stevenson own and operate eight quarries across the Auckland, Waikato and Bay of Plenty regions, including New Zealand's largest quarry, located at Drury.

We continue to help build neighbourhoods and provide for growth - working alongside our communities to make sure we are supporting both people and the environment.



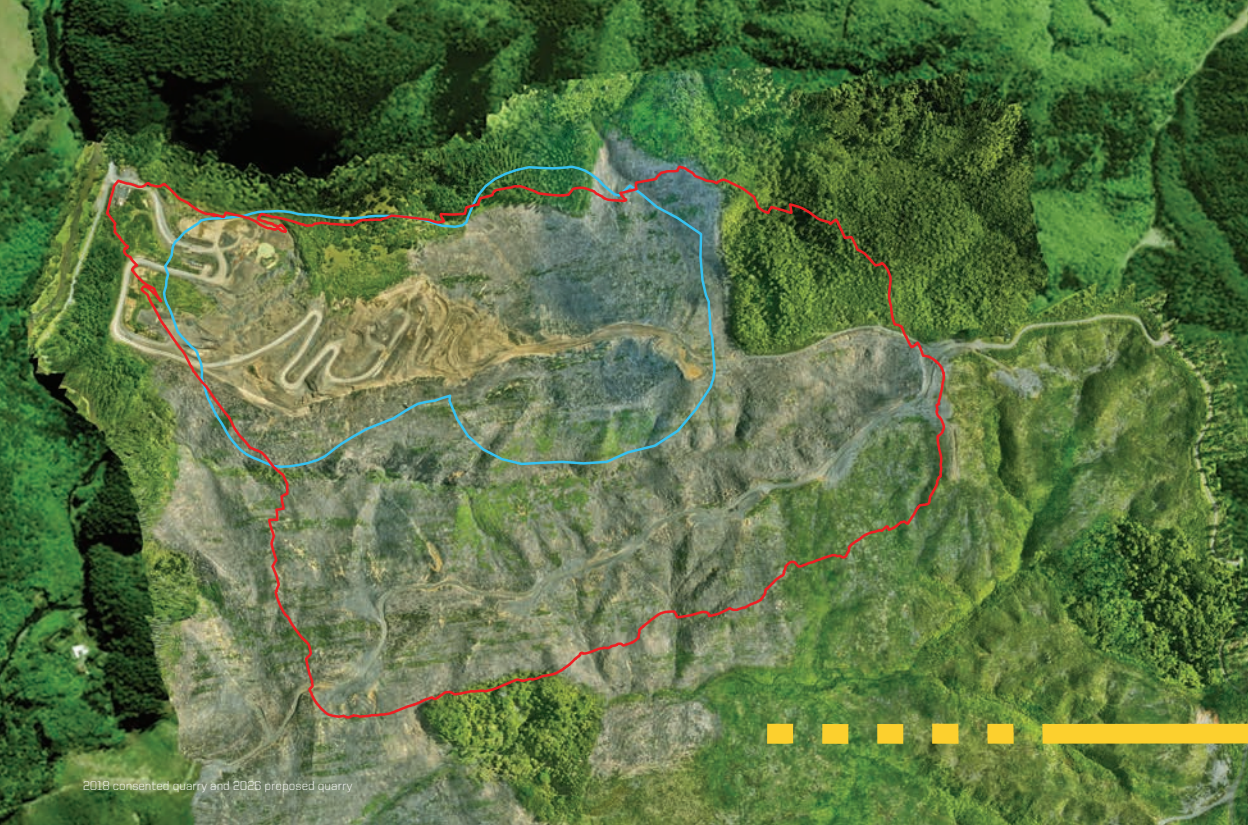
CLEVEDON QUARRY

Clevedon Quarry is a regionally significant quarry that has been in operation, in various forms, since the 1970s. Located south-east of the Clevedon Village and immediately west of the Hunua Ranges Regional Park, the existing Clevedon Quarry sits within a wider area owned by Stevenson and is primarily used for plantation forestry.

The quarry is a source of greywacke hard rock, which supplies aggregate to the expanding Auckland market.

Under the Auckland Unitary Plan (AUP), Clevedon Quarry is within the Special Purpose Quarry Zone, with the adjacent remaining landholdings zoned Rural Production.





2018 consented quarry and 2026 proposed quarry

CLEVEDON QUARRY PROPOSED EXPANSION

In 2018, resource consent was approved to expand Clevedon Quarry over a total area of 29 hectares, with the ability to extract up to 3 million tonne (MT) of aggregate a year.

To meet the increasing needs of a growing market and to operate more efficiently on the site, we're proposing to expand the Clevedon Quarry further.

Summary of the proposed expansion:

- The 35-year consented life of the quarry will extend to 50 years in total.
- There will be no increase in the consented number of truck movements along local roads.
- The consented extraction limit of 3 MT will remain and not increase.
- The total size of the quarry will expand within the Stevenson landholdings but not into any neighbouring properties.
- Extensive planting will be undertaken throughout the site and along the riparian margins of retained streams to off-set ecological loss.
- A new wetland water treatment system will be constructed to manage runoff from the quarry before it enters the Wairoa River.



WHY IS QUARRYING IMPORTANT

Aggregate plays a critical role in Auckland's built environment, providing a raw resource across residential, commercial, infrastructure and road projects. Auckland is expected to continue growing, with an estimated population of 2.8 million by 2048, requiring the construction of another 300,000 houses and greater roading connectivity across the region.

Given the significant role aggregate has in this growth, the success of Auckland's future developments relies on maintaining sustainable aggregate supplies.



SH1 Papakura to Drury upgrades under construction.

Did you know...?

Each new house built requires approximately



250

tonne of aggregate.

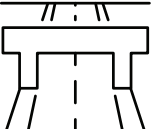
The average sealed suburban road requires



4,000

tonne of aggregate per kilometre.

Every kilometre of state highway uses between



14,000 - 20,000

tonne of aggregate.

Why expand Clevedon?

- Aggregate extraction can only occur where it is found naturally so quarries are often geographically restricted.
- The environmental and economic cost of aggregate increases as it's transported away from a quarry to its final destination.
- Local aggregate, that's close to a project, helps keep construction costs down and can reduce transport emissions to help lower the carbon footprint of the project.
- As the Auckland region continues to grow, particularly in the south and south-east, a secure and cost-effective aggregate supply is needed to support developments.
- Utilising an existing area of aggregate resource allows for more sustainable growth and the proposed Clevedon Quarry expansion will help secure the supply of local aggregate for nearby developments and major infrastructure projects.

TRUCK MOVEMENTS



We Heard:

During the consenting process in 2017 and 2018, the community were clear that traffic and the impact of truck movements to and from the quarry were of significant concern. This included:

- The speed of quarry trucks on local roads.
- The arrival and departure time of trucks to the quarry.
- The total number of trucks per day on local rural roads.
- The route trucks take from the quarry.
- The safety of users on the road, including cyclists, pedestrians and horses.
- The damage that could be caused from unsecure loads.

We Agreed:

As a result of the community concerns in 2018, we agreed to the following resource consent conditions:

- Limit on truck movements, especially ahead of an upgrade to McNicol Road.
- Restriction on the timing of truck movements, especially in the early morning.
- Encourage speed reduction of trucks on Tourist and McNicol Roads.
- Regular meetings with the Clevedon Liaison Group to discuss concerns held by the community.

We Propose:

As part of the proposed expansion, these agreed matters will not be altered.

- Total truck movements limits will not increase beyond the current consented 2018 limits.
- McNicol Road will be widened and an unsealed path will be constructed alongside it.
- The hours of operation of the quarry will not change from those consented in 2018.
- Truck drivers will continue to be subject to the Cartage Contractors Safety Rules.
- Engagement with the Clevedon Liaison Group will continue.





MCNICOL ROAD WIDENING

What is included in the road widening?

Under the 2018 resource consent, limitations were placed on truck movements until upgrades were undertaken to McNicol Road. This provision will remain as part of the expansion plans for Clevedon Quarry as the safety of users of the road is important to us.

The works will include the widening of most of McNicol Road between Tourist Road and Clevedon Quarry to enable two trucks to safely pass each other. This will also include the provision of a 1.5m wide unsealed path alongside McNicol Road to be used by the community.

Why hasn't the work been completed?

Stevenson have been working with Auckland Transport for over five years and through two applications to obtain Engineering Plan Approval for these works. Amendments have been made to address concerns raised, such as moving works away from the Wairoa River as much as possible. We believe we are very close to receiving this approval.

What still needs to be done?

Once approval is formally received, Stevenson will then need to engage with Vector to relocate power poles and Auckland Council to remove a number of trees within the road reserve. We also need to talk with adjacent landowners who may be temporarily affected by the works. Once these steps are completed, physical works can start on McNicol Road.



CONSTRUCTED WETLANDS

A new wetland area will be designed to collect and treat stormwater and quarry run-off within the site. These wetlands can also provide essential habitat for native birds, fish and fauna and positively contribute to the surrounding environment.

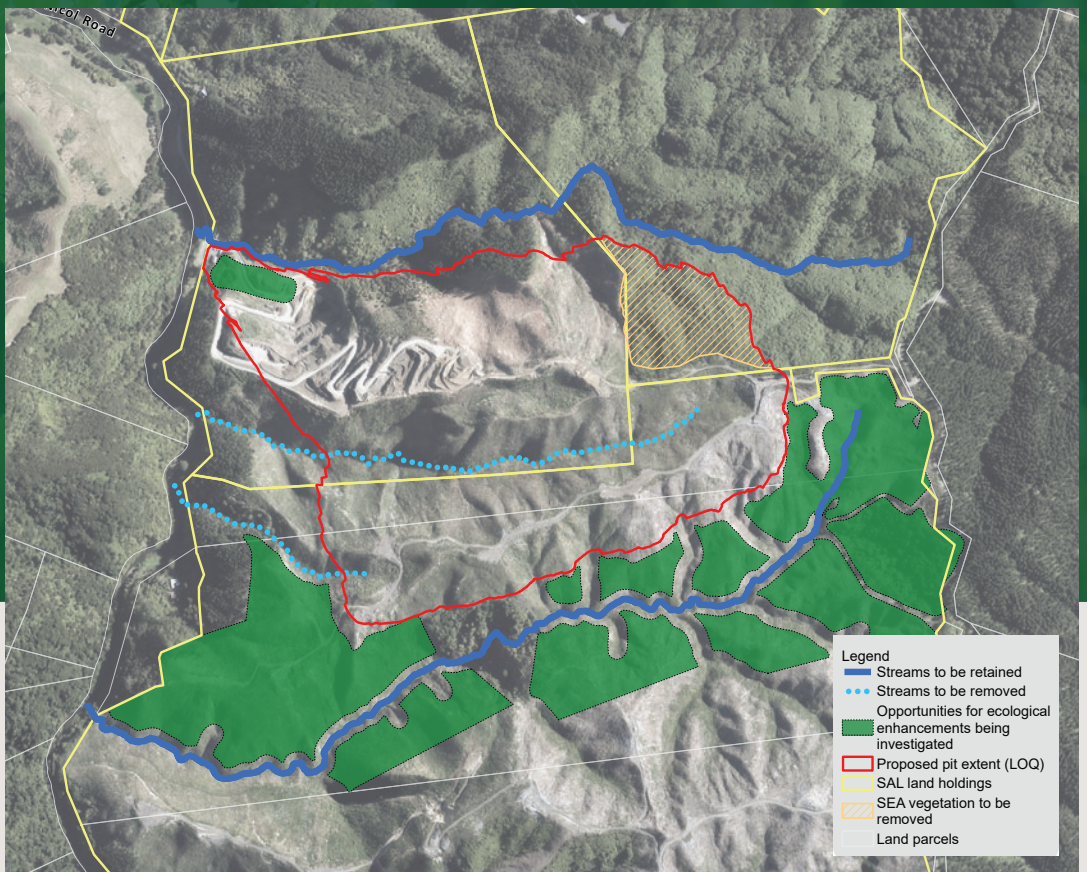
The water collected could be reused on site to reduce the need to take water or it will be fully treated before it is discharged to the Wairoa River. In addition, during extreme rainfall events, the wetlands can be used to hold flood waters within the site.

The wetlands will form part of the wider holistic approach to improving the ecological values of Clevedon Quarry and surrounding environment.

STREAMS AND VEGETATION

The proposed expansion will result in the loss of two streams within the site and the removal of vegetation within a Significant Ecological Area overlay. Large areas of new planting and stream protection will be undertaken to mitigate these losses. This will help to regenerate areas on site and create habitats for native species.

A number of 'At Risk-Declining' flora and fauna, such as Hochsetter's frog, as well as native tuna (eel) species, banded kōkopu and īnanga (whitebait) have been found in stream environments to be retained on the site. Tawhiti para (king fern) has also been found in areas of bush outside of the proposed quarry pit. These areas will be protected as part of the proposed expansion and opportunities to enhance them will continue to be explored by Stevenson.



King fern (tawhiti para)



Native tuna (eel)



Hochsetter's frog



SO WHAT HAPPENS NEXT...?

We plan to lodge a referral application under the Fast Track Approvals Act in **April 2026**. If this is accepted, a detailed consent package will be lodged for approval in **mid-late 2026**, with a decision expected by in the first half of **2027**. However, it will take at least five years before any change to the daily operation of Clevedon Quarry occurs due to the need to prepare the site and construct any new infrastructure.



Stevenson will continue to regularly engage with the Clevedon Liaison Group and surrounding neighbours as further details of the proposed expansion are refined.



We welcome your feedback and any questions you may have. For project updates, visit our website www.stevenson.co.nz